

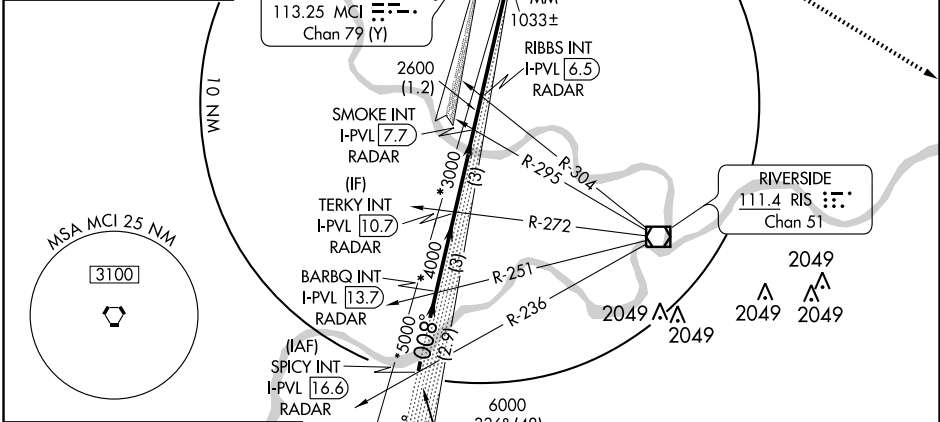
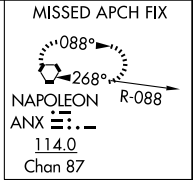
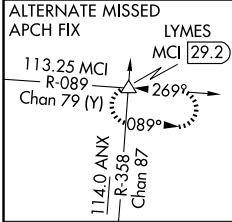
# ILS RWY 1R (CAT III)

KANSAS CITY INTL (MCI)

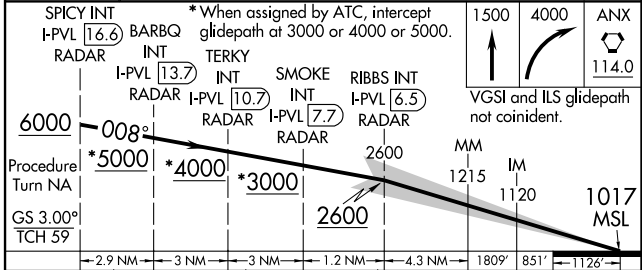
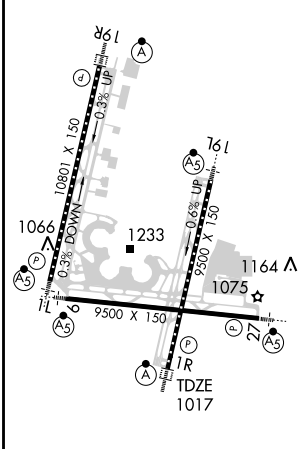
LOC/DME I-PVL <b>110.75</b> Chan 44 (Y)	APP CRS <b>008°</b>	Rwy Idg TDZE Apt Elev <b>9500</b> <b>1017</b> <b>1026</b>
---	------------------------	--

Simultaneous approach authorized with Rwy 1L. ALSF-2  
MISSED APPROACH: Climb to 1500 then climbing right turn to 4000 direct ANX VORTAC and hold.

ATIS <b>128.375</b>	KANSAS CITY APP CON <b>120.95 318.1</b>	INTERNATIONAL TOWER <b>128.2 254.25</b>	GND CON <b>121.8</b>	CLNC DEL <b>135.7</b>
------------------------	--	--	-------------------------	--------------------------



ELEV 1026  
 TDZ/CL Rwy's 1L, 1R, 19L and 19R  
 HIRL all Rwy's



Procedure Turn NA	GS 3.00°	TCH 59	2.9 NM	3 NM	3 NM	1.2 NM	4.3 NM	1809'	851'	1128'
CATEGORY	A	B	C	D						
S-ILS 1R		CAT IIIa	RVR 07							
S-ILS 1R		CAT IIIb	RVR 06							
S-ILS 1R		CAT IIIc	NA							

**CATEGORY III ILS - SPECIAL AIRCREW & AIRCRAFT CERTIFICATION REQUIRED**

NC-3, 01 JUL 2010 to 29 JUL 2010

NC-3, 01 JUL 2010 to 29 JUL 2010